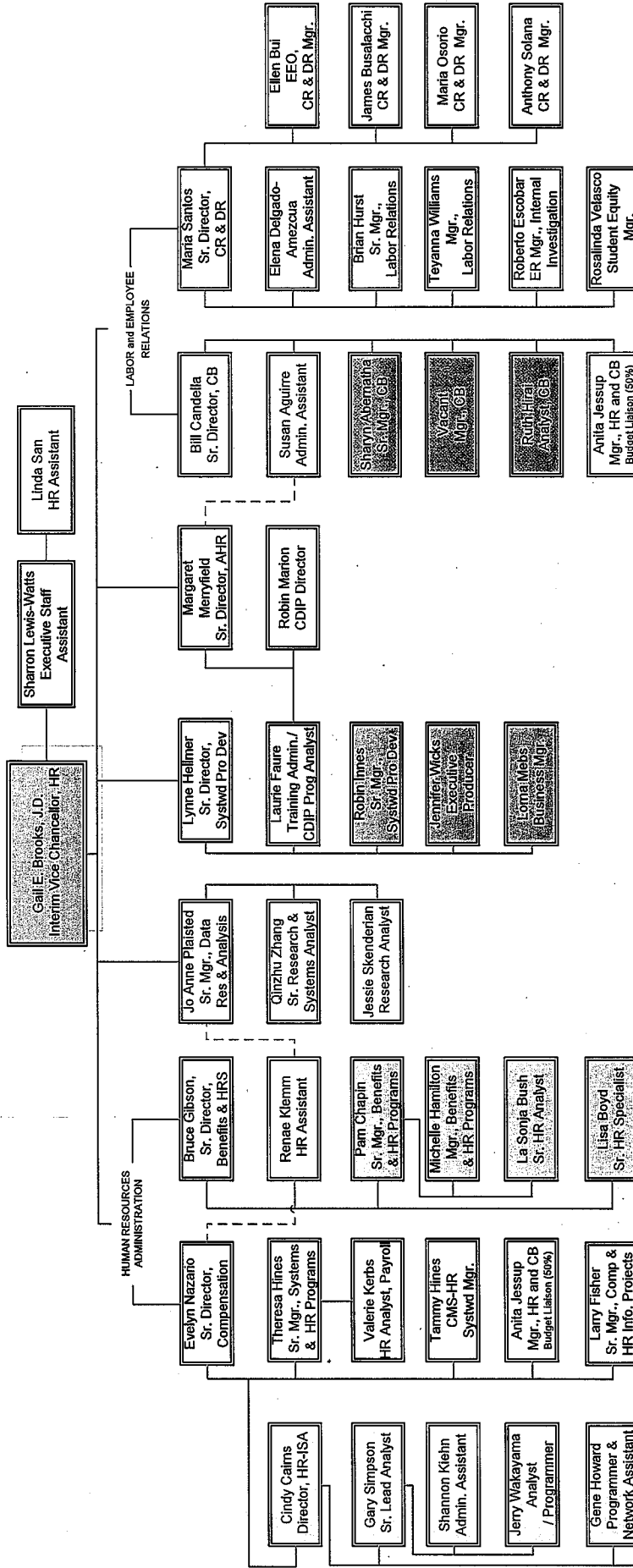


Systemwide Human Resources



Guide to Abbreviations
 AHR - Academic Human Resources
 CB - Collective Bargaining
 CDIP - Chancellor's Doctoral Incentive Program
 CR & DR - Campus Relations & Dispute Resolution
 Data Res & Analysis - Data Research & Analysis
 HR-ISA - Human Resources Information Support & Analysis
 HRS - Human Resource Services for the Chancellor's Office (see separate org chart)
 Systwd Pro Dev - Systemwide Professional Development

Labor Consultants -
 C. Richard Barnes
 and Associates:
 C. Richard Barnes
 John Swarbrick
 Catherine Eflord

*White boxes indicate multiple reporting relationships.