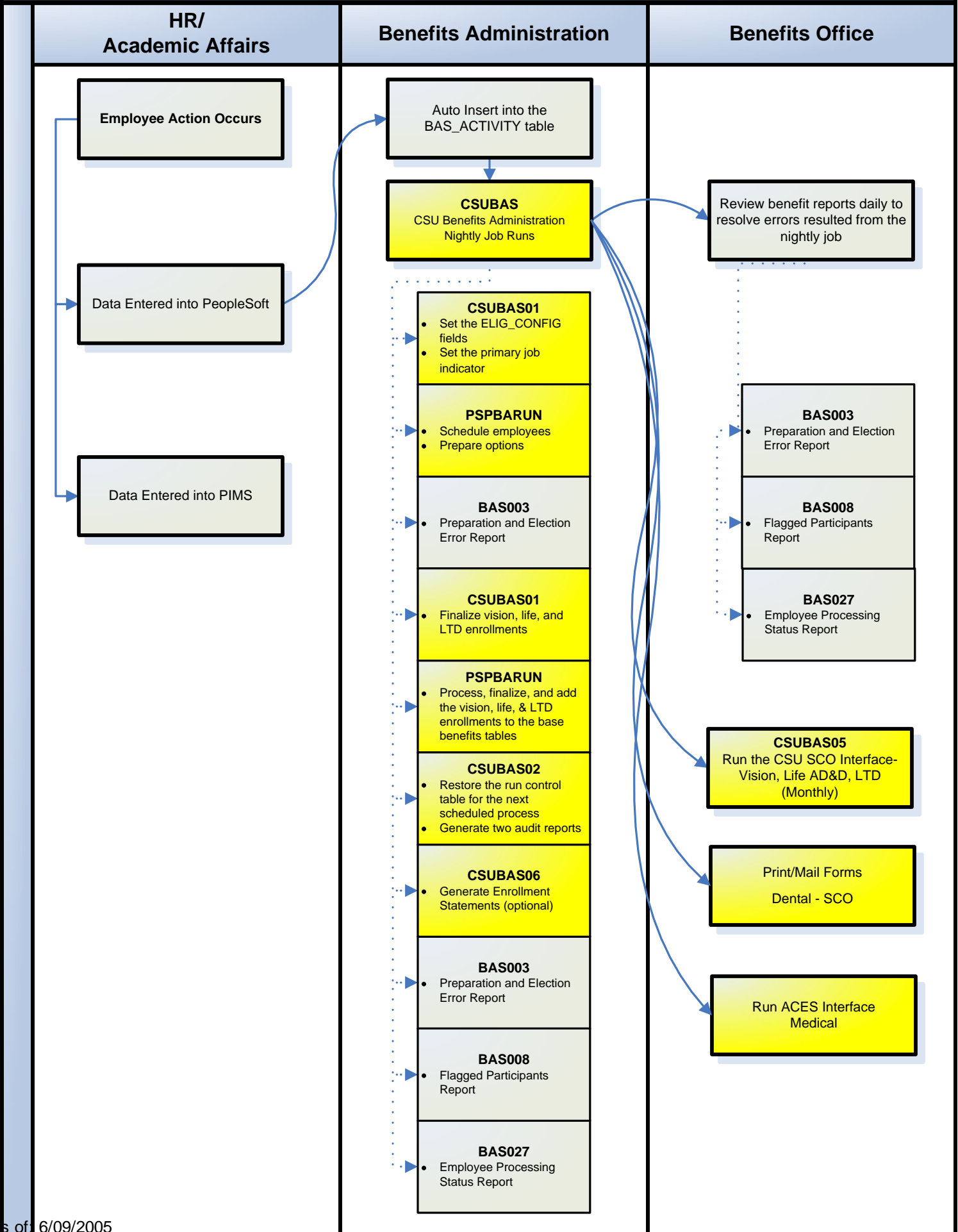


Nightly Processing – ACT Event (Medical, Dental, Vision, Life AD&D, LTD)



Manual Processing – FS1 Event (Dependent Change)

Benefits Administration

Benefits Office

CSUBAS
CSU Benefits Administration
Nightly Job Runs

CSUBAS01
• Set the ELIG_CONFIG fields
• Set the primary job indicator

PSPBARUN
• Schedule employees
• Prepare options

BAS003
• Preparation and Election Error Report

CSUBAS01
• Finalize vision, life, and LTD enrollments

PSPBARUN
• Process, finalize, and add the vision, life, & LTD enrollments to the base benefits tables

CSUBAS02
• Restore the run control table for the next scheduled process
• Generate two audit reports

CSUBAS06
• Generate Enrollment Statements (optional)

BAS003
• Preparation and Election Error Report

BAS008
• Flagged Participants Report

BAS027
• Employee Processing Status Report

Wait for Nightly Process?

Key event into (BAS_ACTIVITY)

Run CSU On Demand Pre-Processing

Use On Demand Event Maintenance to schedule & prepare activity

Enter election for the employee

Enter Dependent Information

Enter CSU Permitting event information for the employee

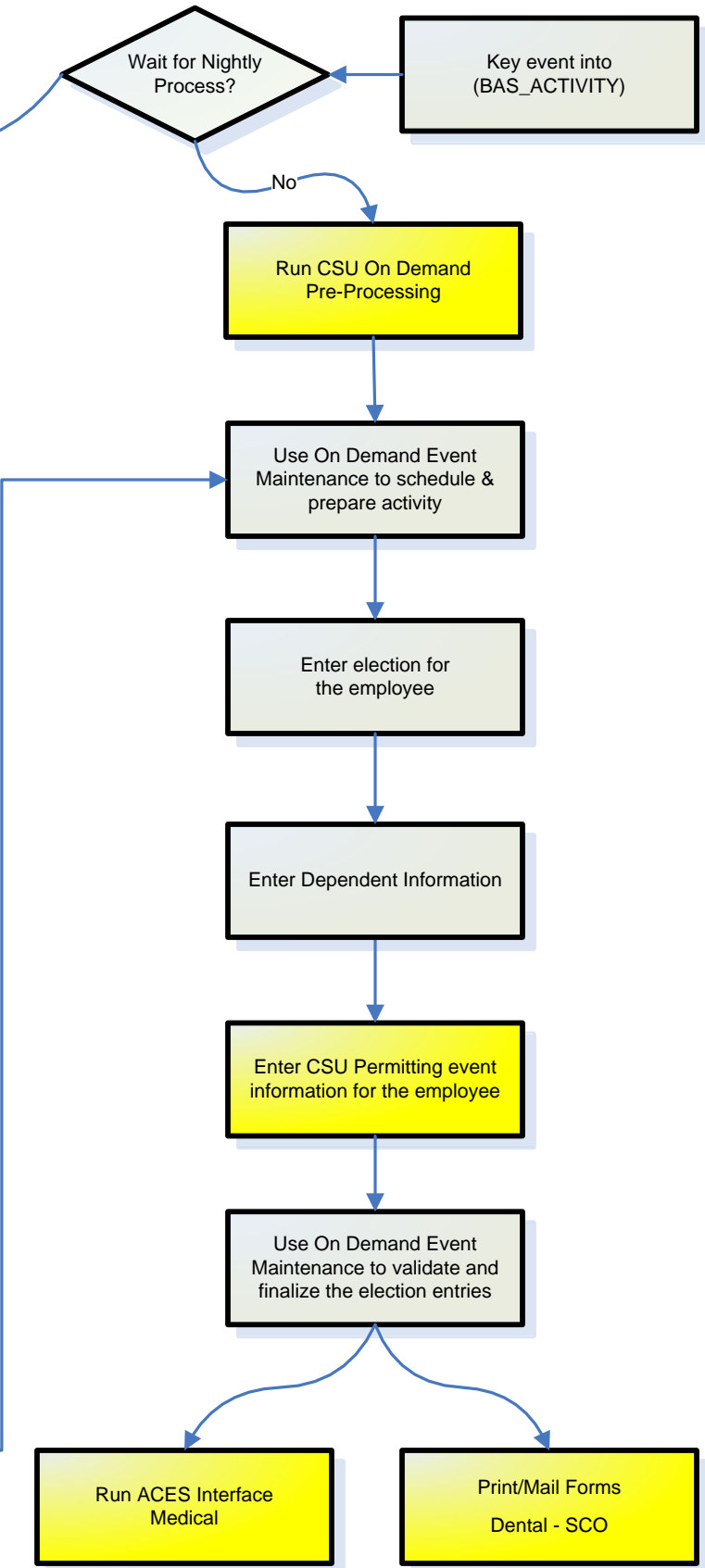
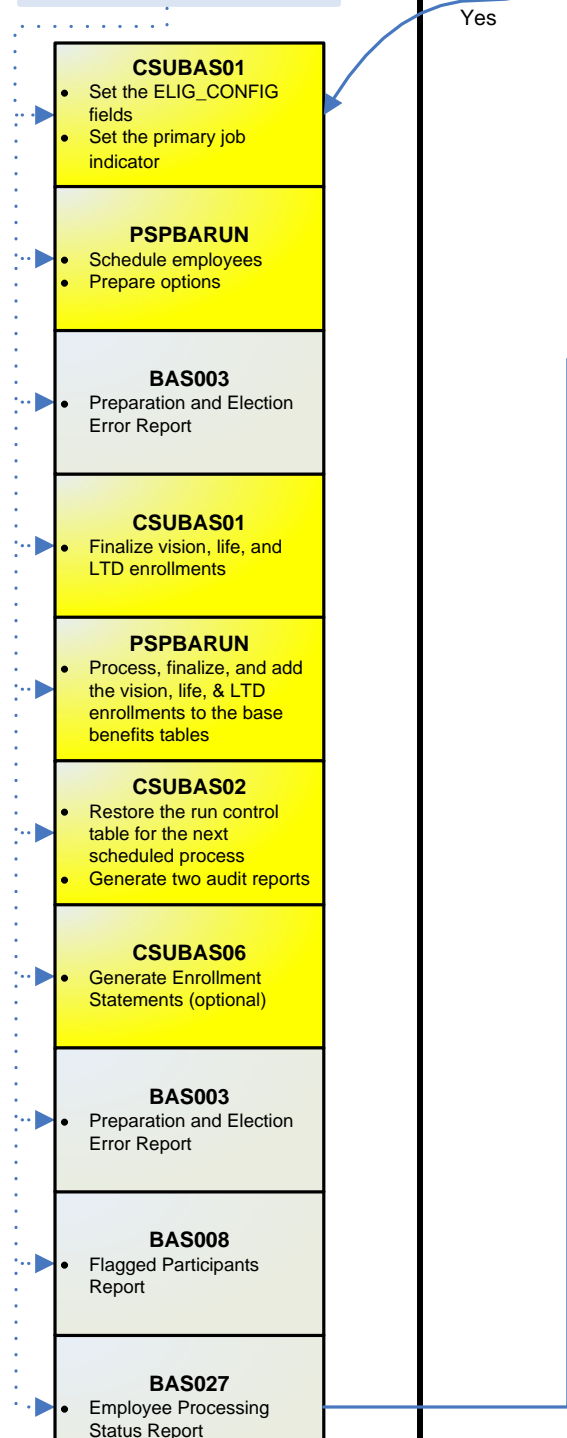
Use On Demand Event Maintenance to validate and finalize the election entries

Run ACES Interface Medical

Print/Mail Forms
Dental - SCO

Yes

No



Manual Processing – FSC Event (Medical/Dental Plan Change)

Benefits Administration

Benefits Office

CSUBAS
CSU Benefits Administration
Nightly Job Runs

CSUBAS01

- Set the ELIG_CONFIG fields
- Set the primary job indicator

PSPBARUN

- Schedule employees
- Prepare options

BAS003

- Preparation and Election Error Report

CSUBAS01

- Finalize vision, life, and LTD enrollments

PSPBARUN

- Process, finalize, and add the vision, life, & LTD enrollments to the base benefits tables

CSUBAS02

- Restore the run control table for the next scheduled process
- Generate two audit reports

CSUBAS06

- Generate Enrollment Statements (optional)

BAS003

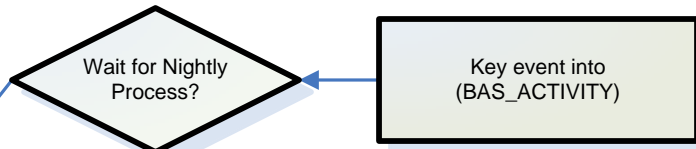
- Preparation and Election Error Report

BAS008

- Flagged Participants Report

BAS027

- Employee Processing Status Report



Yes

No

Run CSU On Demand Pre-Processing

Use On Demand Event Maintenance to schedule & prepare activity

Enter election for the employee

Enter Dependent Information

Enter CSU Permitting event information for the employee

Use On Demand Event Maintenance to validate and finalize the election entries

Run ACES Interface Medical

Print/Mail Forms Dental - SCO

Manual Processing – FSA Event (Flexible Spending - HCRA/DCRA)

Benefits Administration

Benefits Office

CSUBAS
CSU Benefits Administration
Nightly Job Runs

CSUBAS01

- Set the ELIG_CONFIG fields
- Set the primary job indicator

PSPBARUN

- Schedule employees
- Prepare options

BAS003

- Preparation and Election Error Report

CSUBAS01

- Finalize vision, life, and LTD enrollments

PSPBARUN

- Process, finalize, and add the vision, life, & LTD enrollments to the base benefits tables

CSUBAS02

- Restore the run control table for the next scheduled process
- Generate two audit reports

CSUBAS06

- Generate Enrollment Statements (optional)

BAS003

- Preparation and Election Error Report

BAS008

- Flagged Participants Report

BAS027

- Employee Processing Status Report



Key event into (BAS_ACTIVITY)

Run CSU On Demand Pre-Processing

Use On Demand Event Maintenance to schedule & prepare activity

Enter election for the employee

Enter Dependent Information

Use On Demand Event Maintenance to validate and finalize the election entries

Mail Forms - SCO

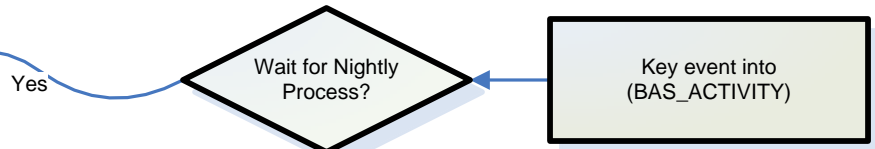
RAFT
Manual Processing – HBE Event (Medical & Dental)

Benefits Administration

Benefits Office

CSUBAS
 CSU Benefits Administration
 Nightly Job Runs

- CSUBAS01**
 - Set the ELIG_CONFIG fields
 - Set the primary job indicator
- PSPBARUN**
 - Schedule employees
 - Prepare options
- BAS003**
 - Preparation and Election Error Report
- CSUBAS01**
 - Finalize vision, life, and LTD enrollments
- PSPBARUN**
 - Process, finalize, and add the vision, life, & LTD enrollments to the base benefits tables
- CSUBAS02**
 - Restore the run control table for the next scheduled process
 - Generate two audit reports
- CSUBAS06**
 - Generate Enrollment Statements (optional)
- BAS003**
 - Preparation and Election Error Report
- BAS008**
 - Flagged Participants Report
- BAS027**
 - Employee Processing Status Report



Run CSU On Demand
 Pre-Processing

Use On Demand Event
 Maintenance to schedule &
 prepare activity

Enter election for
 the employee

Enter Dependent Information

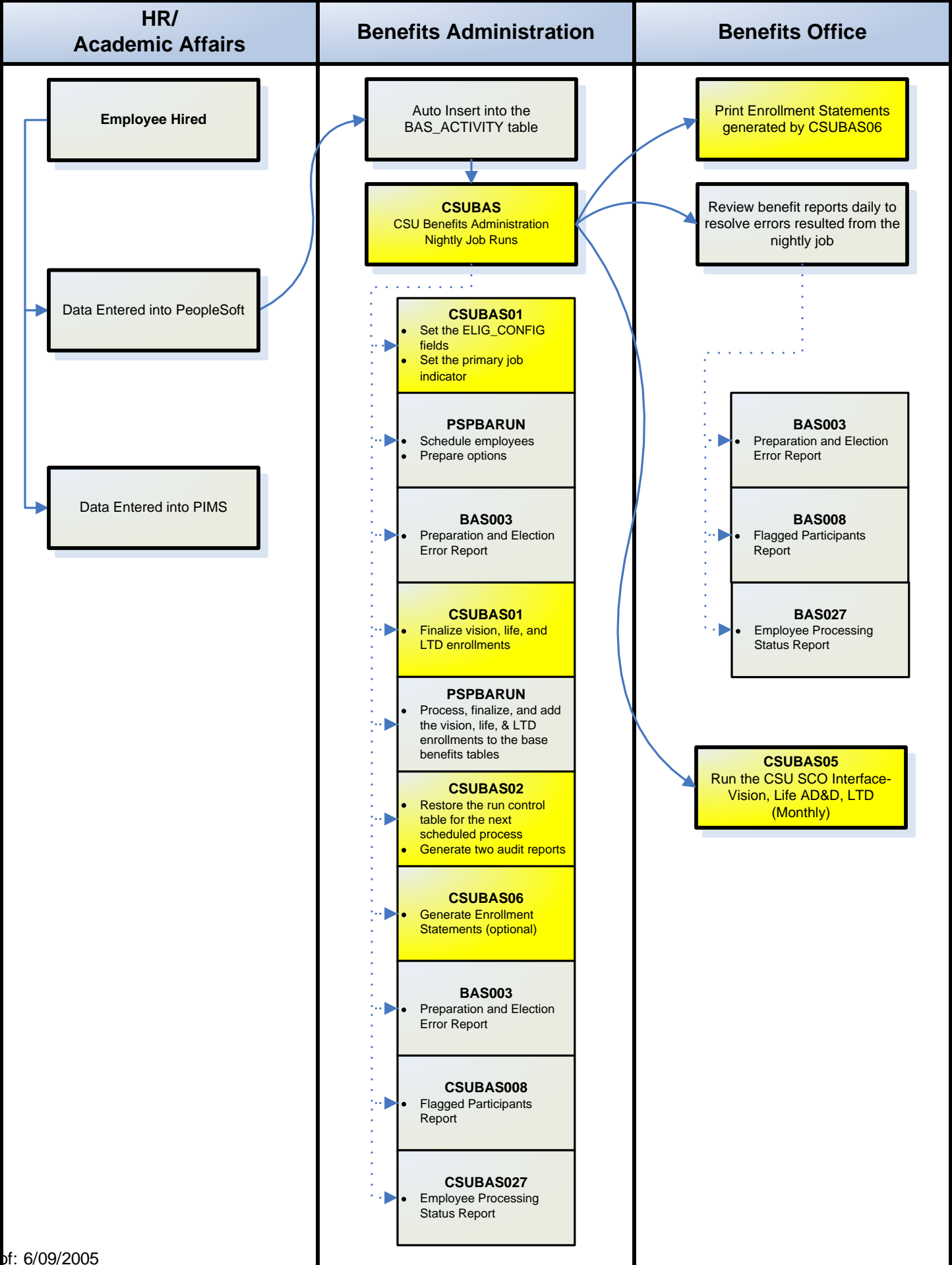
Enter CSU Permitting event
 information for the employee

Use On Demand Event
 Maintenance to validate and
 finalize the election entries

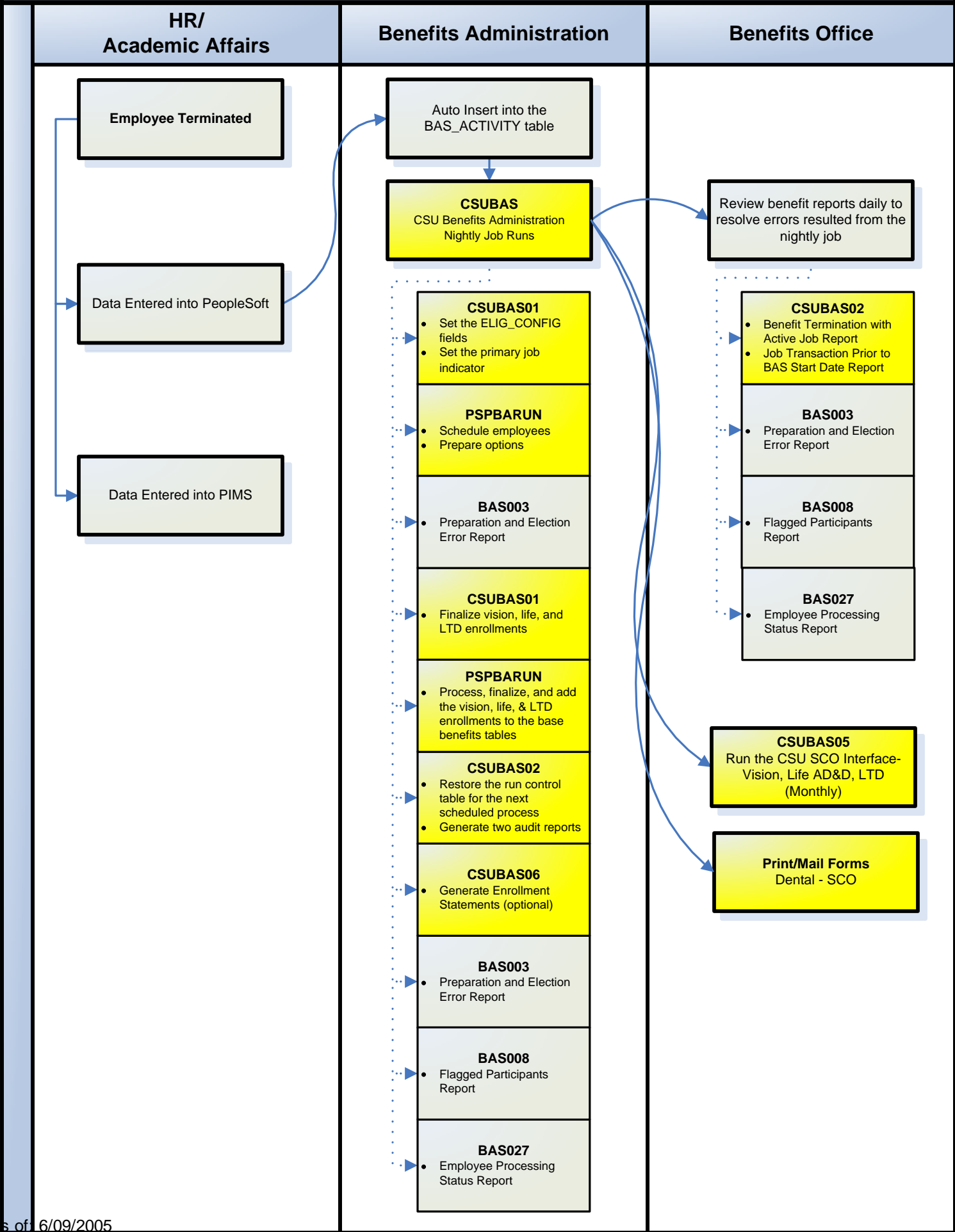
Run ACES Interface
 Medical

Print/Mail Forms
 Dental - SCO

DRAFT
Nightly Processing – HIR Event (Vision, Life AD&D, LTD)



Nightly Processing – TER Event (Medical, Dental, Vision, Life AD&D, LTD)



RAFT
Manual Processing – TSA Event (Savings Plan)

Benefits Administration

Benefits Office

CSUBAS
 CSU Benefits Administration
 Nightly Job Runs

CSUBAS01

- Set the ELIG_CONFIG fields
- Set the primary job indicator

PSPBARUN

- Schedule employees
- Prepare options

BAS003

- Preparation and Election Error Report

CSUBAS01

- Finalize vision, life, and LTD enrollments

PSPBARUN

- Process, finalize, and add the vision, life, & LTD enrollments to the base benefits tables

CSUBAS02

- Restore the run control table for the next scheduled process
- Generate two audit reports

CSUBAS06

- Generate Enrollment Statements (optional)

BAS003

- Preparation and Election Error Report

BAS008

- Flagged Participants Report

BAS027

- Employee Processing Status Report



Key event into
 (BAS_ACTIVITY)

Run CSU On Demand
 Pre-Processing

Use On Demand Event
 Maintenance to schedule &
 prepare activity

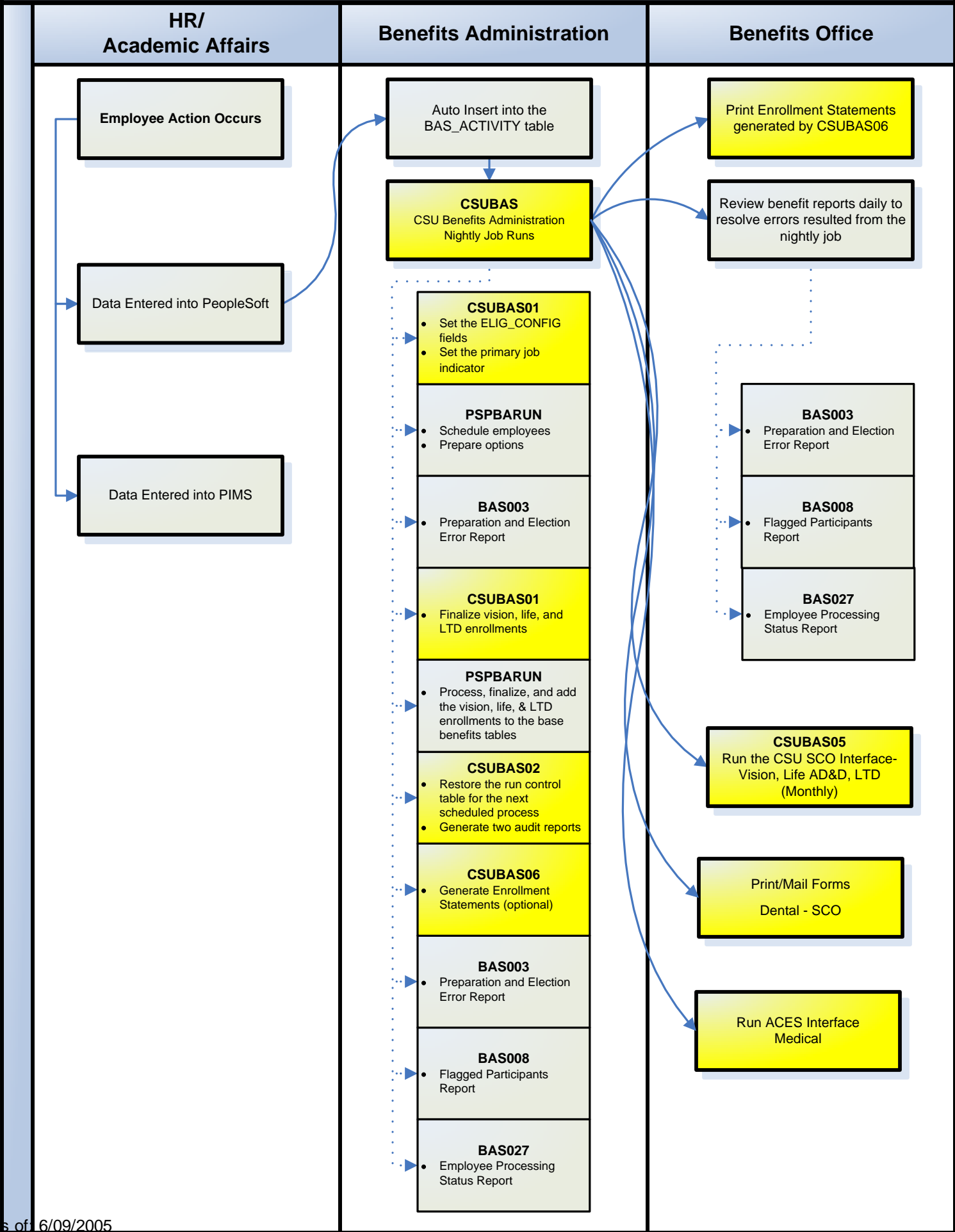
Enter election for
 the employee

Enter Beneficiary Information

Use On Demand Event
 Maintenance to validate and
 finalize the election entries

Print/Mail Forms
 TSA - SCO

Nightly Processing – LVE Event (Medical, Dental Vision, Life AD&D, LTD)



Nightly Processing – MSC Event (Medical, Dental, Vision, Life AD&D, LTD)

