



# CMS Monthly Status Report

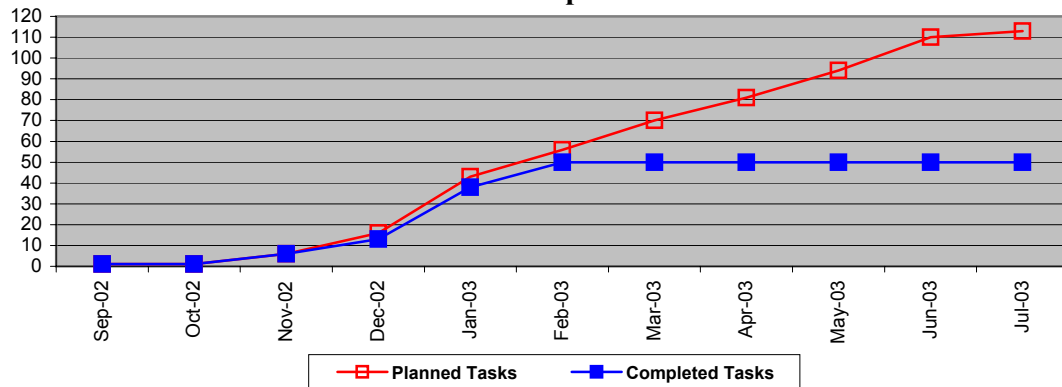
February-2003  
CSU, Bakersfield

HR 8.0 Implementation Status Detail

<b>Implementation:</b>	HR 8.0
<b>Modules Impl.</b>	Admin WF, Recruit WF
<b>Target Go-Live:</b>	July 1, 2003
<b>Project Status:</b>	On Schedule
<b>Impl'n Partner:</b>	IO Consulting

Start Date	End Date	Milestone	Status	% Complete
5/30/02	9/30/02	Readiness Assessment	Complete	100%
12/16/02	1/23/03	Campus Planning	In Progress	64%
12/2/02	3/27/03	Campus Design	In Progress	70%
11/5/02	5/12/03	Campus Development	In Progress	20%
2/3/03	6/17/03	Campus Testing	In Progress	20%
5/8/03	6/11/03	Campus End User Training	Not Started	0%
7/1/03	7/1/03	Campus Go Live Date	Not Started	0%

**Planned vs Completed Tasks**



**Recent Activity / Accomplishments (Last 30 Days):**

- (1) Completed prototyping process for Administer and Recruit Workforce.
- (2) Completed LCD prototyping without a Finance instance.
- (3) Completed first test conversion.
- (4) Began prototyping validation.

**Key Upcoming Activities (Next 30 Days):**

- (1) Define and begin development of interfaces.
- (2) Determine whether LCD will occur during the HR implementation or as part of Finance.
- (3) Re-run the LCD prototype with specific employees and situations.
- (4) Decide which modifications/bolt ons requested by the HR group will be implemented pending CMS approval.
- (5) Complete prototype validation testing.

**Current Issues / Concerns:**

- (1) Should LCD be brought up as a part of the HR implementation?
- (2) Can Foundation interface into Finance from ADP easily?
- (2) Should there be an interface from PeopleSoft to Banner?